

Quilt*mag*ine

For Nolting Quilting Machine's

Importing Files

Quilt*mag*ine comes with some great digital designs loaded for you to first try stitching out these can be used for block's or basic pantographs but everyone wants to know how to import that special design there dying to try, so I will quickly show you how to import a design into your software.

Quilt*mag*ine with read many different file formats (types)

Important - do not download directly to your tablet, do this to your desktop or laptop and then save to a flash drive, **Quilt*mag*ine will not read zipped** (compressed) files. I have created a special folder on my desktop as a Library of all my digital files; this is a great backup location in case I lose a file or if it becomes corrupt. Simply copy and paste the desired file onto your flash drive to import into your tablet. It is recommended that you do not store all your digital files within your tablet as this will slow your software down.

Once you have the desired file on your flash drive insert it into the USB hub in your table.

In the **Design & Create** menu select **Quilt Layout** the screen will open now,



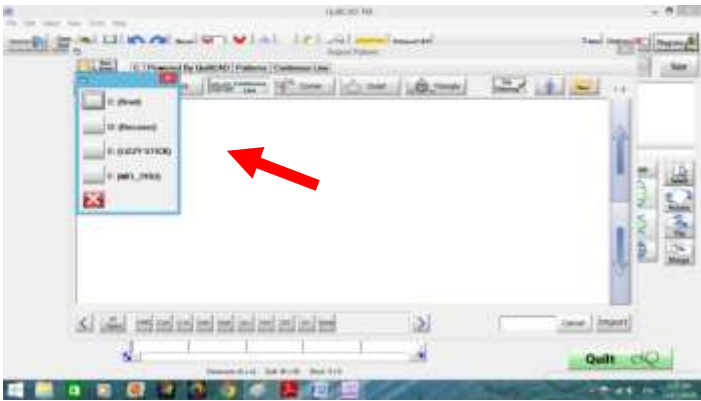
Select the Plug-ins Icon



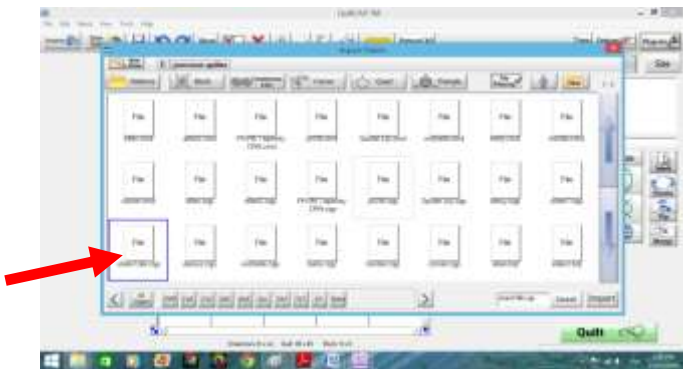
Select the Import Icon



Select New Drive icon, and navigate to your flash drive, you will note that it will list all the drives attached to your tablet like all computers.



Note: mine is E: Lizzy Stick, your will say something different. , select the one that is your flash drive .



Select the desired file



Select Ok



Select the New Folder Icon, following the prompts on the screen name your folder.



Now select the folder you created to open,



Select on the bottom right where said File name is, the keyboard will appear, type the file name by the Select letters on the keyboard, and then Select enter. You have successfully imported a file.