

## TABLE ASSEMBLY

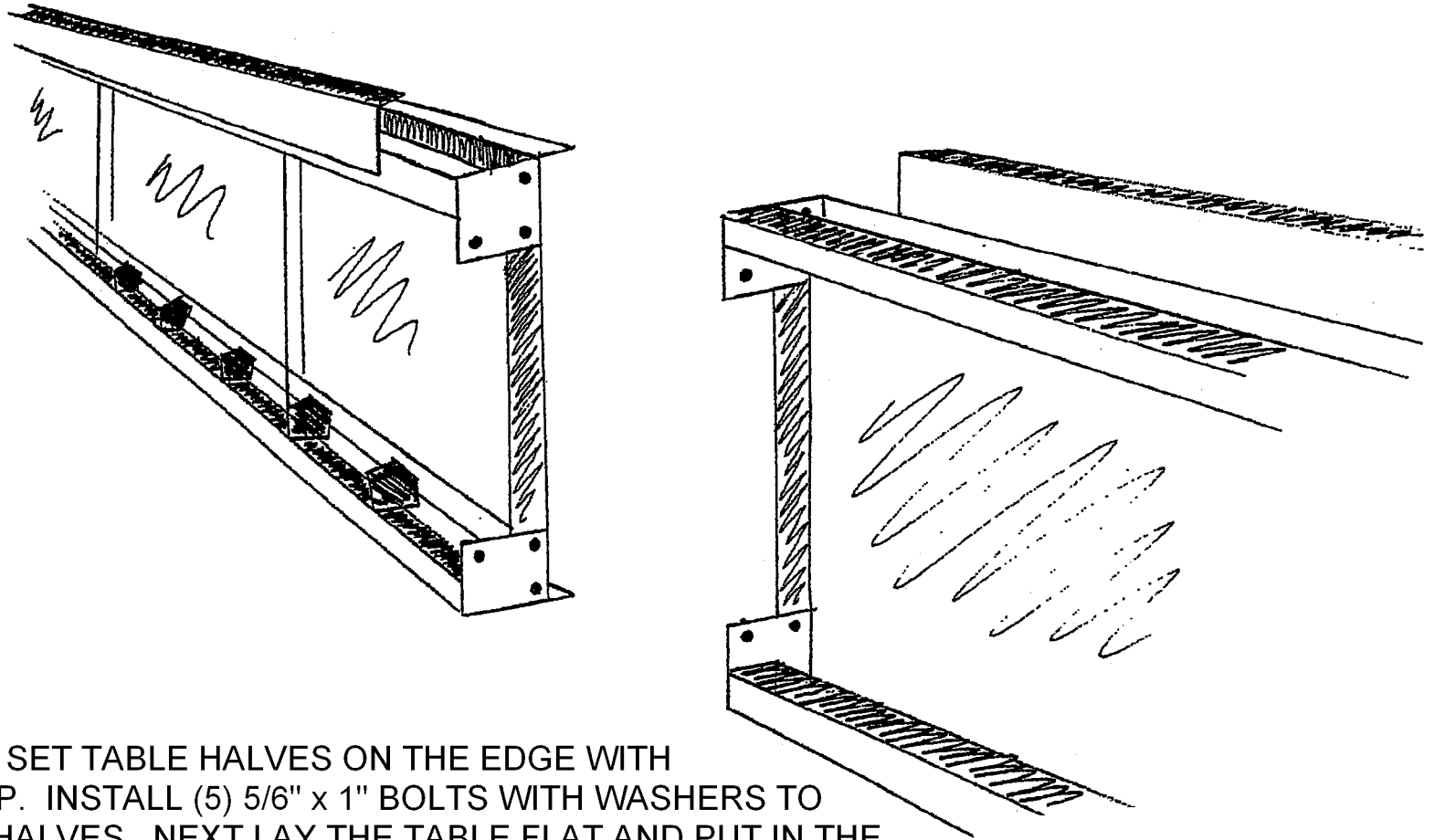
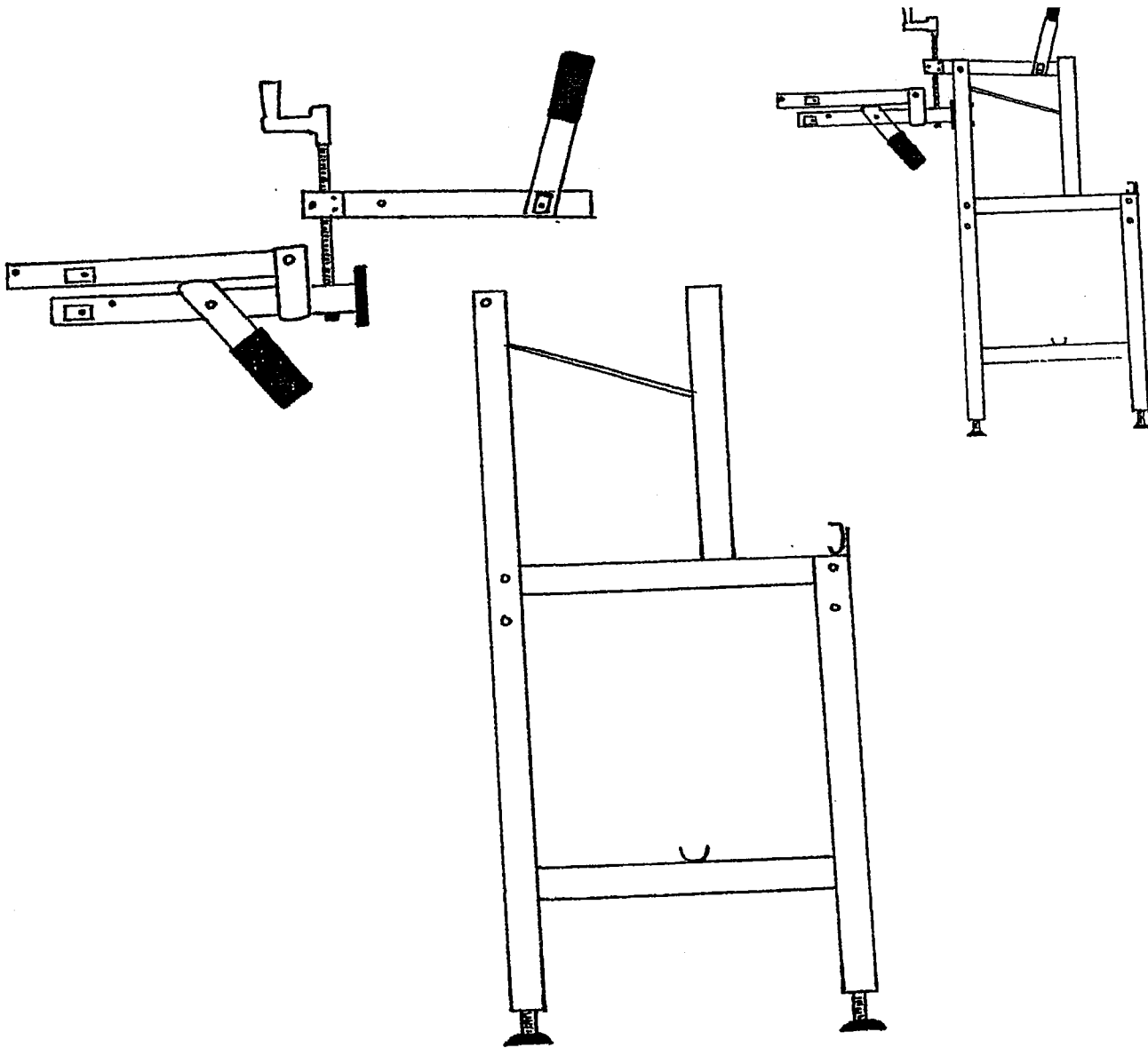


TABLE SET UP: SET TABLE HALVES ON THE EDGE WITH CORD TRAYS UP. INSTALL (5) 5/6" x 1" BOLTS WITH WASHERS TO JOIN THE TWO HALVES. NEXT LAY THE TABLE FLAT AND PUT IN THE SIXTH BOLT. BE SURE TABLE TOP IS FLUSH ON TOP AND ANGLE IRON IS FLUSH ON INSIDE TOP. THIS WILL MAKE THE TRACK GO EASY AND STRAIGHT. NOW TIGHTEN COMPLETELY ALL SIX OF THE BOLTS.

**MATCH UP LETTER PARTS**

**USE FASTENER BAG A**

## ATTACH ARM UNIT TO LEG UNIT



**NEXT DO THE RIGHT END-ATTACH ARM (RIGHT). THE ONE WITH THE REMOVABLE PINS. USE (2) 1/4" x 20 X 2 1/4" BOLTS WITH NUTS.**

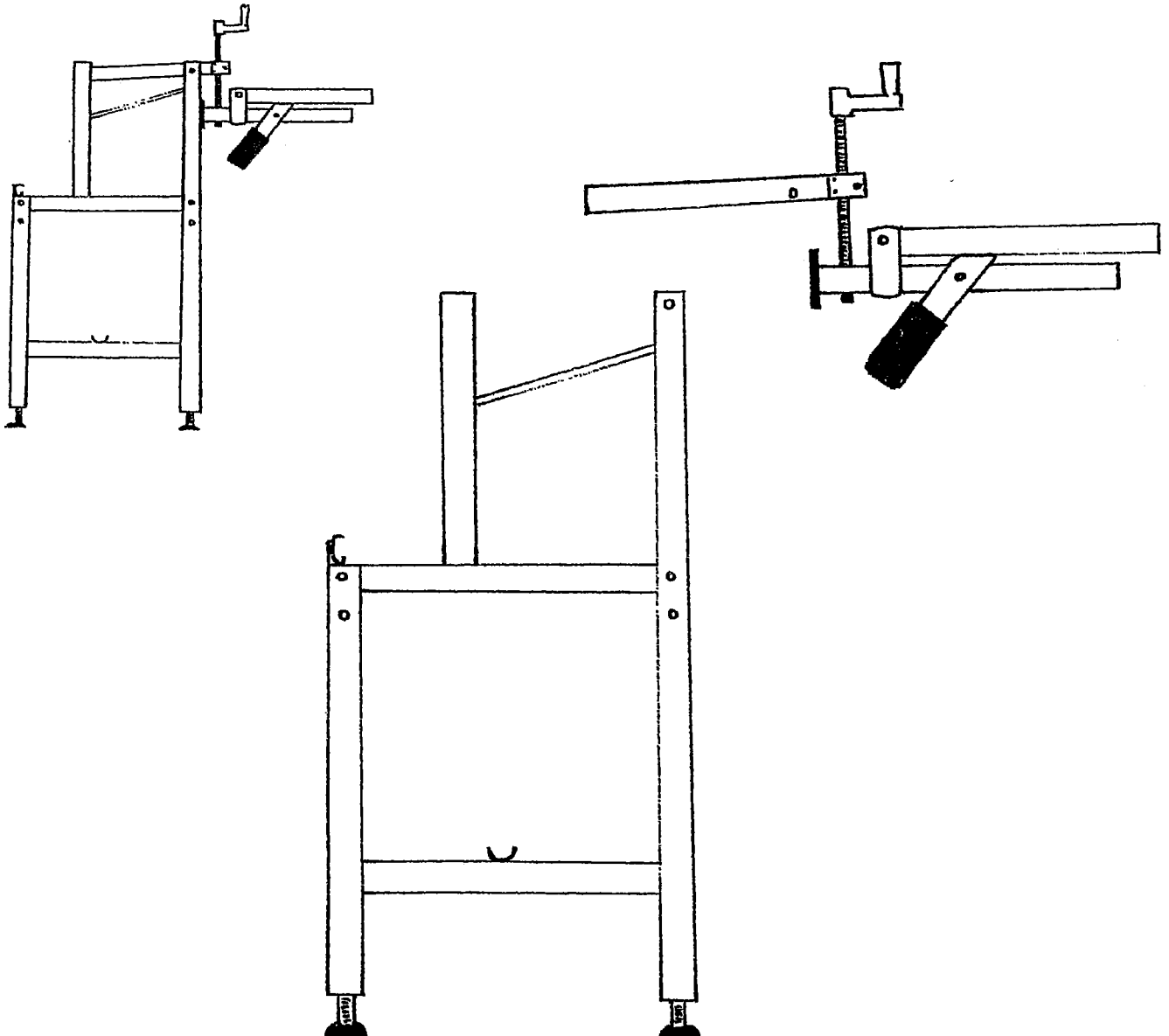
**MATCH UP LETTERED PARTS  
USE FASTENER BAG D**

## ATTACH ARM UNIT TO LEG UNIT

INSTALL ROLLER ARM (LEFT). THIS IS THE ARM WITH THE WELDED PINS FOR HOLDING THE ROLLERS. USE (2) 1/4 " x 20 x 2 1/4" BOLTS WITH NUTS.

MATCH UP LETTERED PARTS

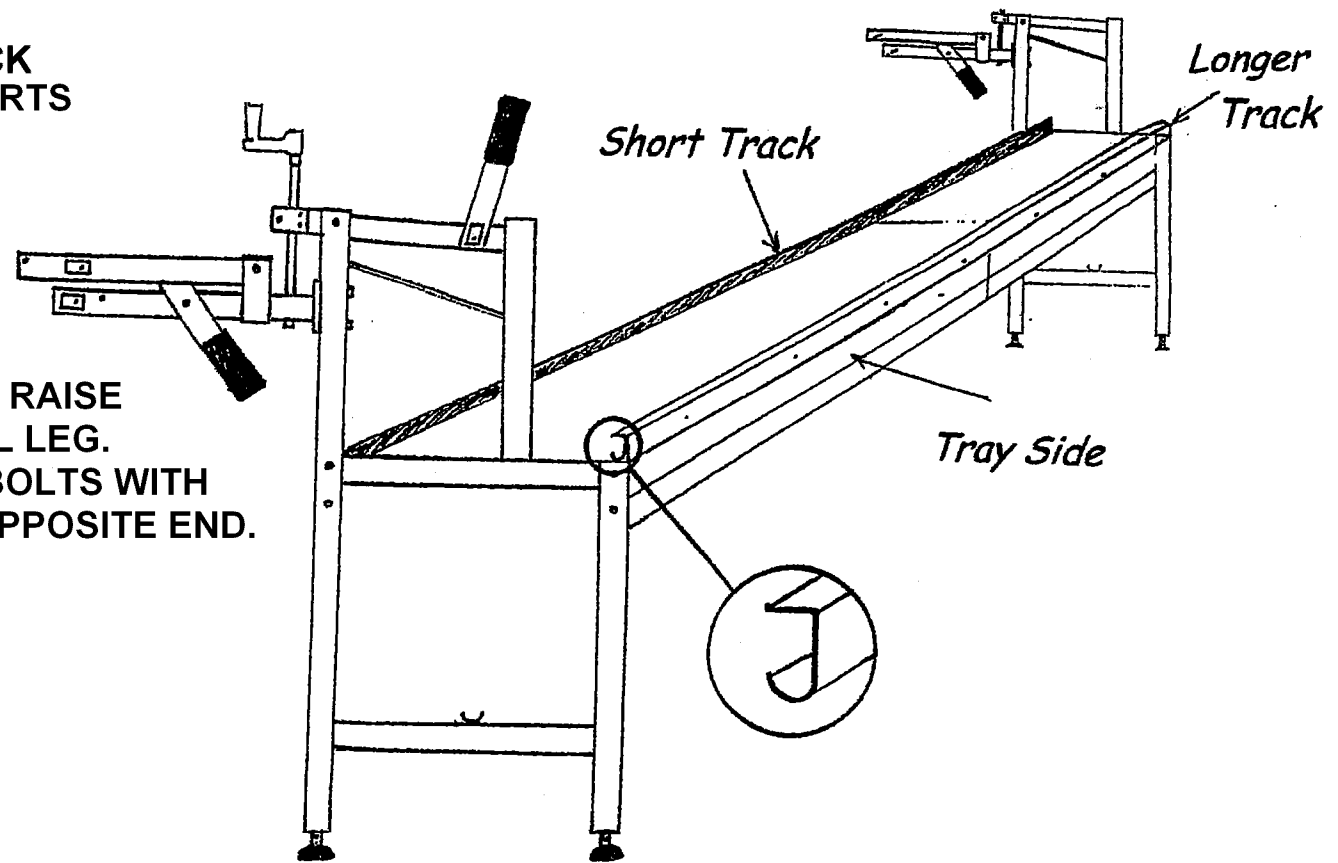
USE FASTENER BAG D



**INSTALL LEG UNITS AND TRACK  
MATCH UO LETTERED PARTS  
MATCH UP LETTERED PARTS**

**USE FASTENER BAG C**

**INSTALL LEG UNITS TO TABLE: RAISE  
TABLE ON ONE END TO INSTALL LEG.  
USE 4 1/4" x 20 x 2" HEX HEAD BOLTS WITH  
NUTS. DO THE SAME ON THE OPPOSITE END.**

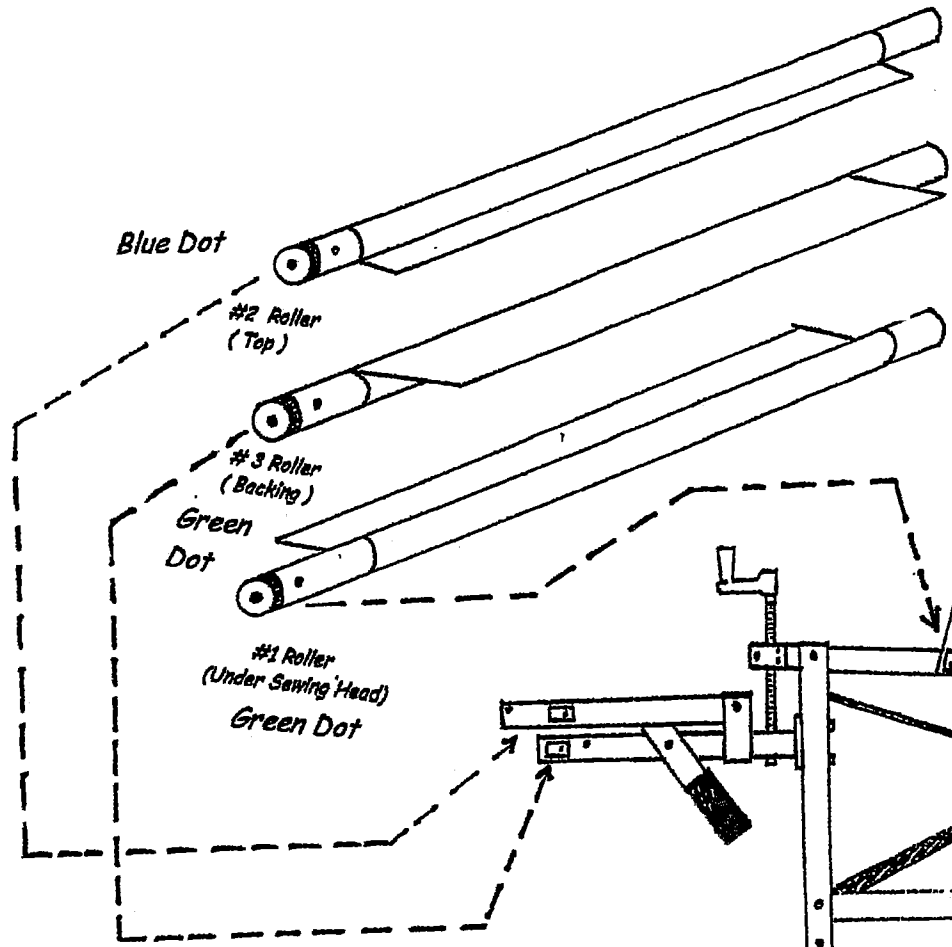


**WHEN INSTALLING TABLE TRACK, HOLD BACK TRACK 18" FROM END OF TABLE. PUT THE CROSS TRACK (WITH ELECTRICAL ON THE TRAY SIDE OF THE TABLE) ON THE TABLE AND SLIDE TRACK OVER THE WHEELS OF THE CROSS TRACK. NOW LINE UP HOLES ON THE TABLE AND THE TRACK. INSERT THE BUTTON SOCKET CAPS SCREWS IN THE TABLE AND TRACK. PUT THE NUTS TO THE INSIDE.**

**USE FASTENER BAG B**

INSTALL ROLLERS  
TO ATTACH ROLLER SEE DIAGRAM

TO ATTACH ROLLER SEE DIAGRAM  
SLIDE ROLLER ONTO WELDED SHAFT FIRST.  
REMOVE SET SCREW ON THE OTHER SHAFT.  
SLIDE OUT TO ALLOW THE ROLLER TO FIT  
BETWEEN ARM. SLIDE SHAFT INTO ROLLER.  
MAKE SURE BRASS BUSHING IS LINED UP TO  
ALLOW SHAFT TO ENTER. IT IS VERY TIGHT.  
SECURE SET SCREW AND DO THE OTHER  
TWO ROLLERS.  
REMOVING PLASTIC FROM ROLLERS:  
DO NOT CUT!

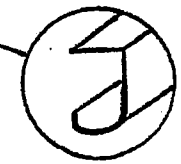
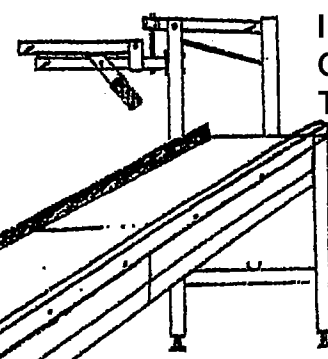


REMOVING PLASTIC FROM ROLLERS  
DO NOT CUT!!

1. PLACE ROLLERS IN PROPER POSITION ON ASSEMBLED TABLE.

2. RELEASE DOG TO ALLOW ROLLER TO TURN FREELY.

3. PULL ON TAIL OF WRAP WHILE TURNING ROLLER IN CORRECT DIRECTION TO UNWRAP.



## BOBBIN WINDER

PLACE BOBBIN WINDER ON MACHINE TABLE OR OTHER CONVENIENT SURFACE. INSERT TALL THREAD GUIDE IN HOLE. IN THE THREAD STAND WITH LOOP FACING BOBBIN WINDER MOTOR. TIGHTEN SCREW. PUT SHORT SPINDLE IN THE CENTER OF THE STAND. THIS IS JUST FORCE TO THE CENTER HOLE. PLACE CONE OF THREAD ON THE SHORT SPINDLE ON THE THREAD STAND. BRING THE THREAD UP THROUGH TALL THREAD STAND (SEE DRAWING) NEXT RUN THREAD THROUGH HOLE IN TENSION GUIDE THEN AROUND AND UNDER PULL UP INTO THE TENSION DISCS. FROM THERE BRING THREAD OVER TO THE BOBBIN. ON THE MOTOR SHAFT. THE SHAFT HAS A SLIT IN THE MIDDLE TO DECREASE OR INCREASE THE TIGHTNESS OF THE BOBBIN SHAFT. SPREAD TO TIGHTEN AND SQUEEZE TOGETHER TO REDUCE.

WIND A FEW TURNS OF THREAD ONTO THE BOBBIN. LOWER MOTOR DOWN SO THE FLAT METAL PIECE FROM THE SWITCH GOES BETWEEN THE SIDES OF THE BOBBIN. TURN OFF THE SWITCH. THE BOBBIN WILL SHUT OFF WHEN FULL.

TURN OFF SWITCH BEFORE PICKING UP MOTOR.

IF BOBBIN WINDER DOES NOT WIND BOBBINS EVENLY, LOOSEN SCREW #2 AND MOVE THE THREAD GUIDE TO THE RIGHT OR LEFT AS APPROPRIATE. IF IT DOES NOT FILL OR OVER FILL YOU MAY HAVE TO BEND THE FLAT METAL PIECE UP OR DOWN TO MAKE IT SHUT OFF AT THE PROPER TIME. SHUT OFF WHEN FULL.

WE RECOMMEND YOU FILL ENOUGH BOBBINS TO FINISH THE PROJECT AT ONE TIME. THIS WAY YOU WILL NOT HAVE TO STOP AND WIND BOBBINS DURING WORK.

